

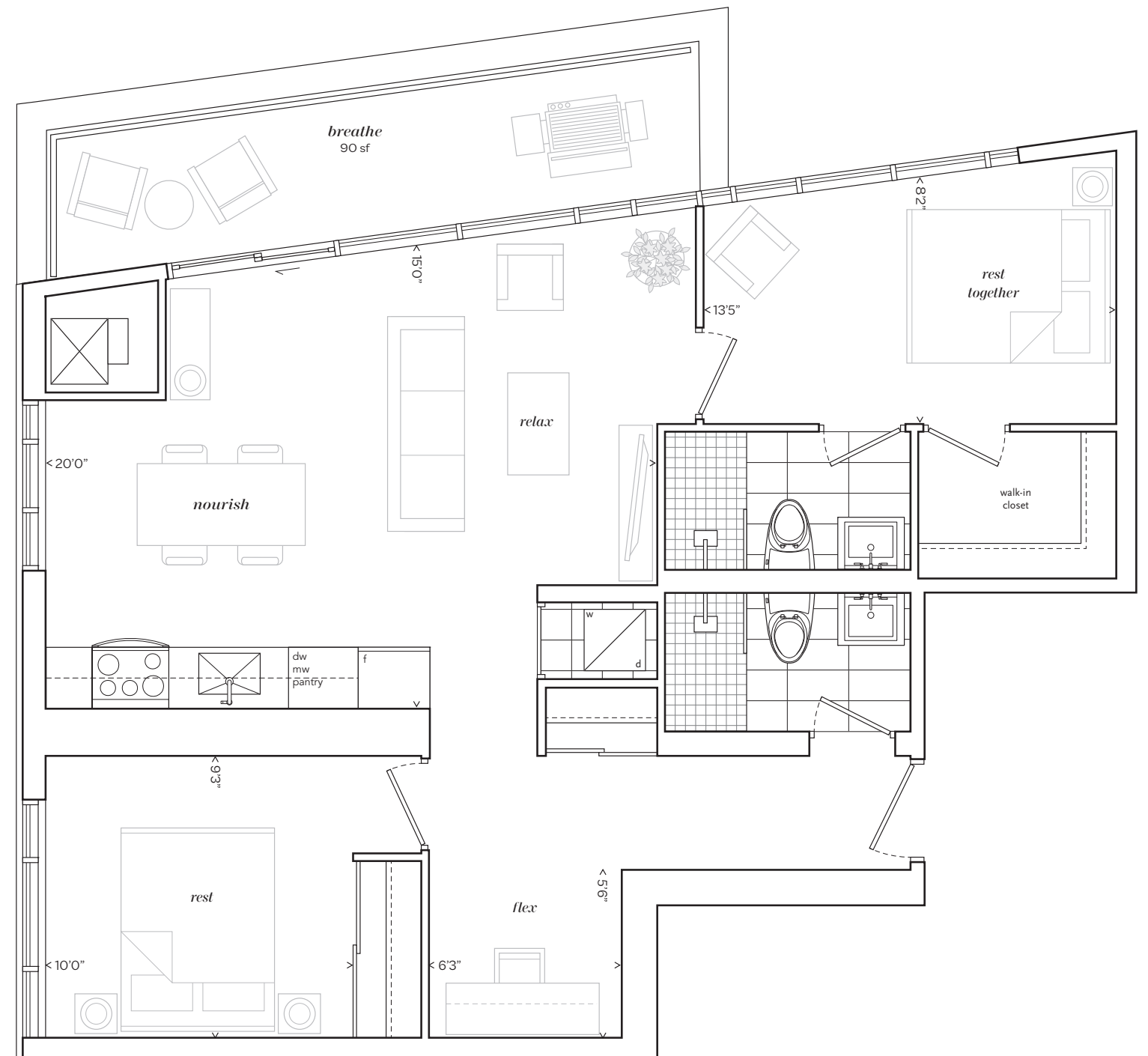


PH 02

10FT HIGH CEILINGS IN LIVING SPACES
 STUNNING LIVING/DINING DESIGN - SOUTH EAST FACING
 TWO LARGE BEDROOMS & 2 FULL BATHROOMS
 GAS BIB CONNECTION ON THE BALCONY

Ph02

TWO BEDROOM + FLEX / **935 SF TOTAL**
845 SF INTERIOR PLUS
90 SF BALCONY



All sizes, dimensions and specifications are subject to change without notice. This plan is not to scale and is subject to architectural review and revision. In order to comply with building site conditions and municipal, structural, vendor and/or architectural requirements, actual living areas may vary from floor area stated. Floor area has been measured and may vary in accordance with Bulletin #22 published by the Tarion Warranty Corporation. window location, size and type may vary without notice. All furniture shown on marketing plans are not included. Purchasers acknowledge that the dwelling units with terraces or balconies may contain an interior step up for access to such terraces or balconies. The balcony area finishing material and any dividers, where applicable, may vary from suite to suite based on design and material specifications. Balcony/Terrace dimensions, configuration and location are estimates only and may not be exactly as shown. Location of columns, size and type may vary without notice. E.&O.E. © May 2021